



Program Planning, Development, and Evaluation

Idaho

Winner

Impact/WebCARS

Idaho Transportation Department

Impact2K (Idaho Mobile Program for Accident CollecTion) /WebCARS is an innovative software system allowing for state-of- the-art crash data collection and analysis, providing the tools and information needed to aid safety officials in identifying problem areas and developing strategies for increasing the safety of Idaho's roadways.

The program simplifies and facilitates the reporting process for officers in describing crashes, and offers an entirely paperless reporting system. Experienced police officers have stated that they can complete a crash report in less than half the time it takes to create a paper version. Used in conjunction with Easy Street Draw to create a collision sketch, users can generate a detailed crash scene diagram in minutes.

Timely and accurate collision data is critical to effective safety programs. WebCARS helps agencies address specific information needs including high accident location identification, intersection analysis, listing accidents by street, segment code and milepost and monthly summaries, to name a few of its applications. WebCARS also features Easy Street Draw and Intersection Magic Diagramming Wand, which allow a user to view collision sketches and engineering collision diagrams while analyzing the crash data. Another outstanding feature of this system is that it is available free of charge to all local agencies.



CONTACT

Mark Strait
Idaho Transportation Department
Tel. 208-334-8106
Mark.strait@itd.idaho.gov



Iowa

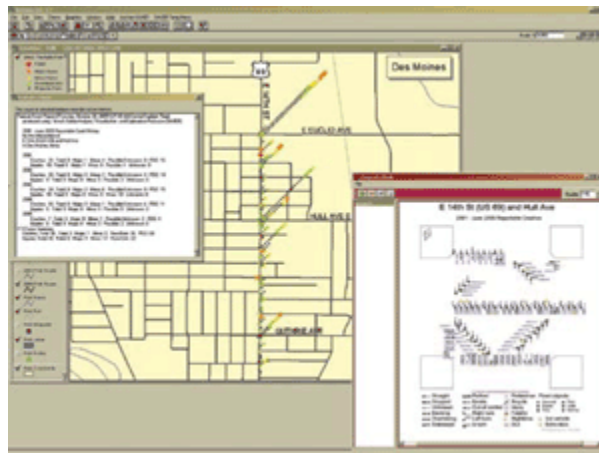
Winner

Highway Safety GIS

Iowa Department of Transportation

The Iowa Statewide Traffic Records Committee convened in 1994 and participated in an external assessment of the state's traffic records by experts in the fields of data collection and management. The assessment led to the development of a strategic plan for data improvements. Key recommendations from the assessment included: improve timeliness of the accident data available for local and state users and improve accident location systems by exploring new technologies. A major concern was the crash location coding of the existing link-node location system. It was labor-intensive and a major contributor to the lag in available data. Replacing that system became a top priority.

Solutions to both the lag time and the cumbersome location coding method were not found until Iowa began to move crash data into a Geographic Information System (GIS) format. Development of Iowa's Highway Safety GIS began in 1997 by converting 10 years of crash history to a GIS platform. The user-friendliness of the system has been enhanced over the years and GIS is now used as a multidisciplinary and multi-agency tool by local and state agencies. The GIS is distributed statewide on a CD and is provided with free training and technical support. Summaries and analyses are also available via several web resources.



The unified database covers all crashes on all Iowa public roadways, allowing the tool to be useful at every level of government. In 2000, Iowa implemented electronic location software to capture coordinates and add locations to the roadway network. This "smart map" technology ensured that all crashes were located by a highly reliable method. In April 2005, the final steps were achieved. The Highway Safety GIS now complies with the Minimum Model Uniform Crash Criteria, a national standard for uniform, accurate and reliable crash data. The system also achieved its goal for providing timely data with the inclusion of 2005 crash data.

The impact of the Highway Safety GIS has been dramatic. Information from the GIS is supplied to a wide range of safety programs such as Safety Conscious Planning, the Iowa Safety Circuit Rider, the Transportation Engineering Assistance Program, 3R Roadway Safety Audits, and many others. Thanks to Highway Safety GIS, the entire state is now empowered with data-driven decision-making for highway safety.



CONTACT

Joyce Emery
Iowa Department of Transportation
Tel. 515-239-1016
Joyce.emery@dot.iowa.gov
